





## BREAKFAST POINT

51/53 Peninsula Drive

Luxury waterfront living in prestigious Breakfast Point community

3 2 2

Located on the fifth floor of the highly sought 'Hunters Wharf' building, this prized penthouse boasts impeccable architecture, superior quality inclusions and high-end finishes. Overlooking pristine manicured parklands and the tranquil Kendal Bay, this stunning retreat enjoys an unrivalled position, showcasing spectacular views through to Sydney Harbor Bridge. Also featuring:

-Open plan kitchen/dining/living with seamless flow to expansive alfresco entertaining

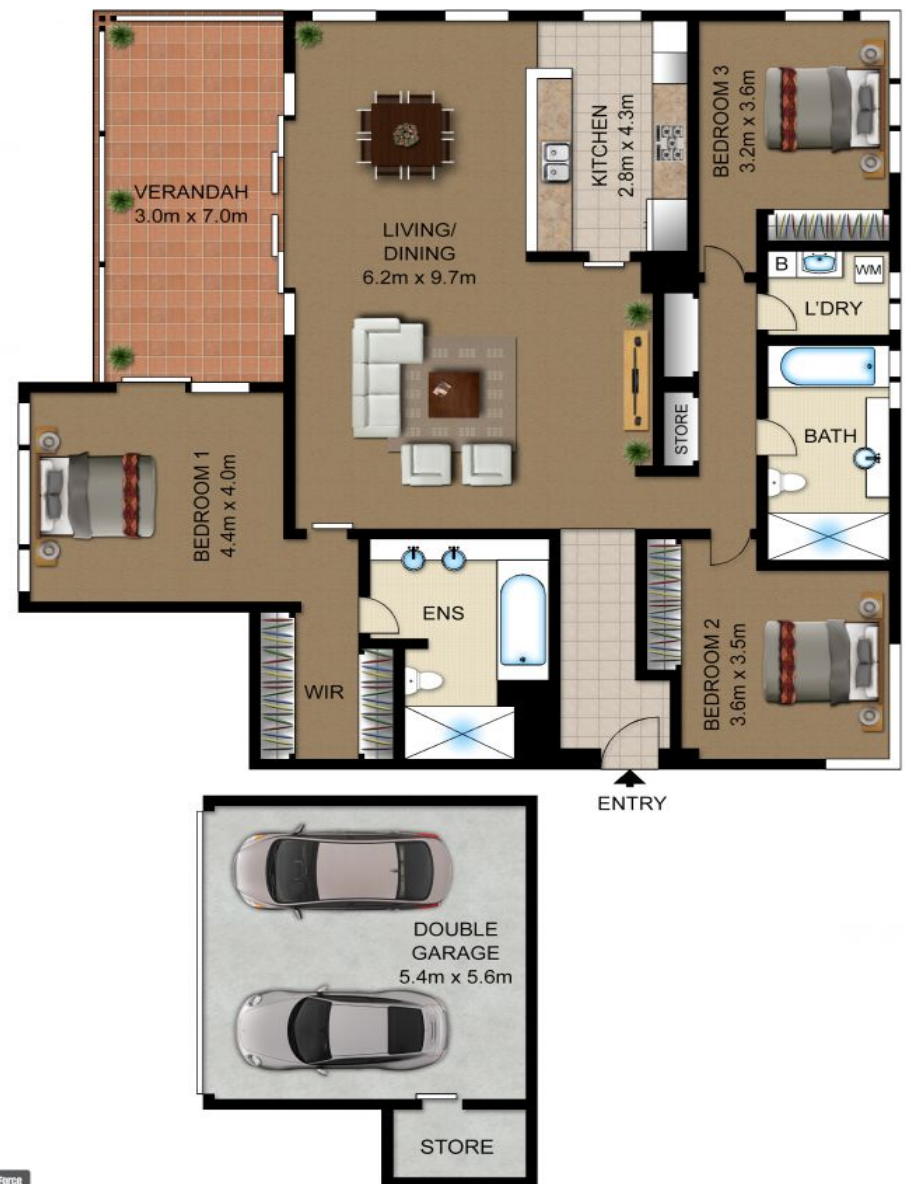
Features Air Conditioning, Area Views, Built-ins, Car Parking - Basement, Carpeted, Close to Schools, Close to Shops, Close to Transport, Intercom, Tennis Court

## CONTACT

Cameron Nicholls 0421 733 118

NICHOLLS & CO  
ESTATE AGENTS

\*Disclaimer:



PrintForce

NICHOLLS & CO  
ESTATE AGENTS

51/53 Peninsula Drive, BREAKFAST POINT

Not to scale • All measurements are approximate • Drawn for marketing purposes only • Floorplan by © Industrie Media



1/569 Great North Road, Abbotsford 2046 0421 733 118 [nichollsandco.com.au](http://nichollsandco.com.au)