





BREAKFAST POINT

27/16 Orchards Avenue

Exceptional entry point into the exclusive Breakfast Point community



Conveniently located a short 200m stroll from the village's buzzing shopping and cafe precinct, this beautifully presented apartment is a must to inspect. Also enjoying an enviably low levy amount, this low-rise boutique property presents an exciting opportunity for investors, lifestyle seekers or astute buyers. Featuring:

-Access to resort style amenities including Country Club, gymnasium, swimming pools, tennis

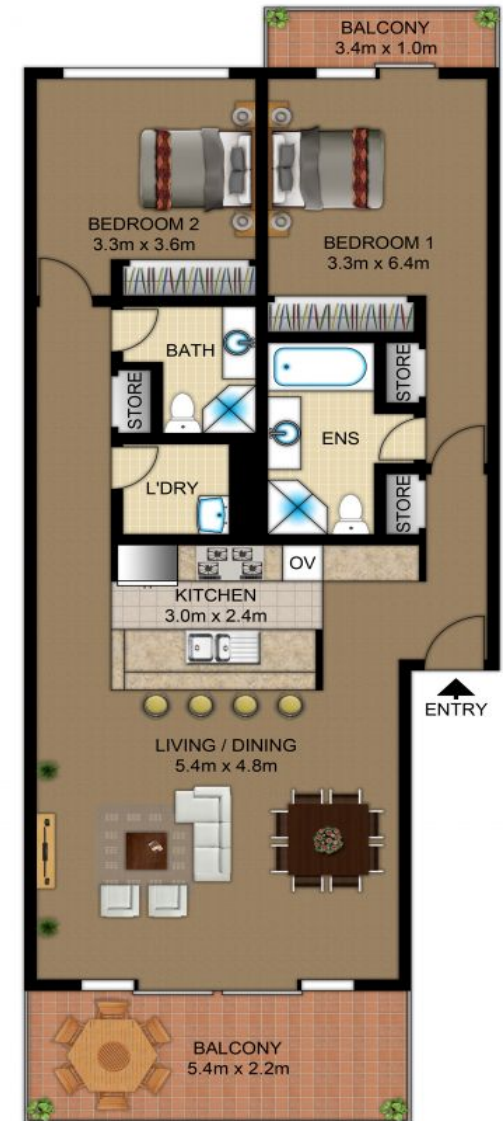
Features Built-ins, Car Parking - Basement, Close to Schools, Close to Shops, Heating, Intercom, Pets Allowed

CONTACT

Cameron Nicholls 0421 733 118

NICHOLLS & CO
ESTATE AGENTS

*Disclaimer:



INT : 102m² (EXCLUDING BALCONY)

PrintForce

NICHOLLS & CO
ESTATE AGENTS

27/16-20 Orchard Avenue, BREAKFAST POINT

Not to scale • All measurements are approximate • Drawn for marketing purposes only • Floorplan by © Industrie Media



1/569 Great North Road, Abbotsford 2046 0421 733 118 nichollsandco.com.au