





BREAKFAST POINT

312/7-11 Magnolia Drive

Spacious contemporary living



Stylish living takes a sophisticated turn with this contemporary 'Augusta' apartment. Located in a well sort after area it is perfectly positioned

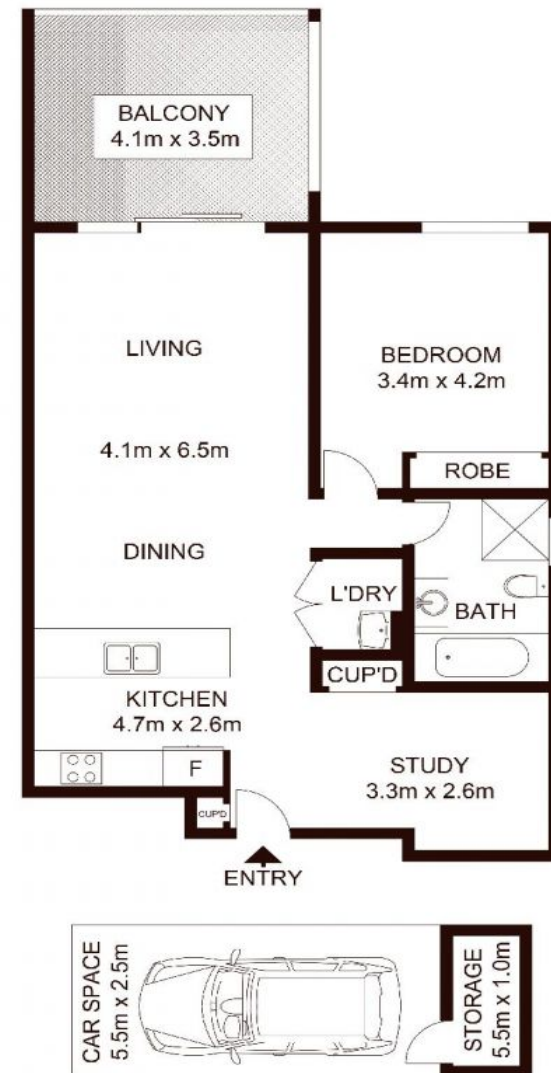
Features Air Conditioning, Car Parking - Basement, Close to Schools, Close to Shops, Close to Transport, Intercom, Lift Installed, Study, Tennis Court

CONTACT

Cameron Nicholls 0421 733 118

NICHOLLS & CO
ESTATE AGENTS

*Disclaimer:



INT : 74m²

PrintForce

NICHOLLS & CO
ESTATE AGENTS

312/7-11 Magnolia Drive, BREAKFAST POINT

Not to scale • All measurements are approximate • Drawn for marketing purposes only • Floorplan by © Industrie Media



1/569 Great North Road, Abbotsford 2046 0421 733 118 nichollsandco.com.au