





## BREAKFAST POINT

32/28 Village Drive

Location, space and style



Showcasing generous proportions and state-of-the-art finishes, this luxury north-east facing apartment is enviably located overlooking the Village Green and city skyline beyond. Providing an exclusive lifestyle in a prime location, this stylish property is set in a small boutique complex, just footsteps to the Country Club and waters' edge. Also featuring:

- Secure, peaceful and private with views overlooking the Green
- Substantial open plan interiors

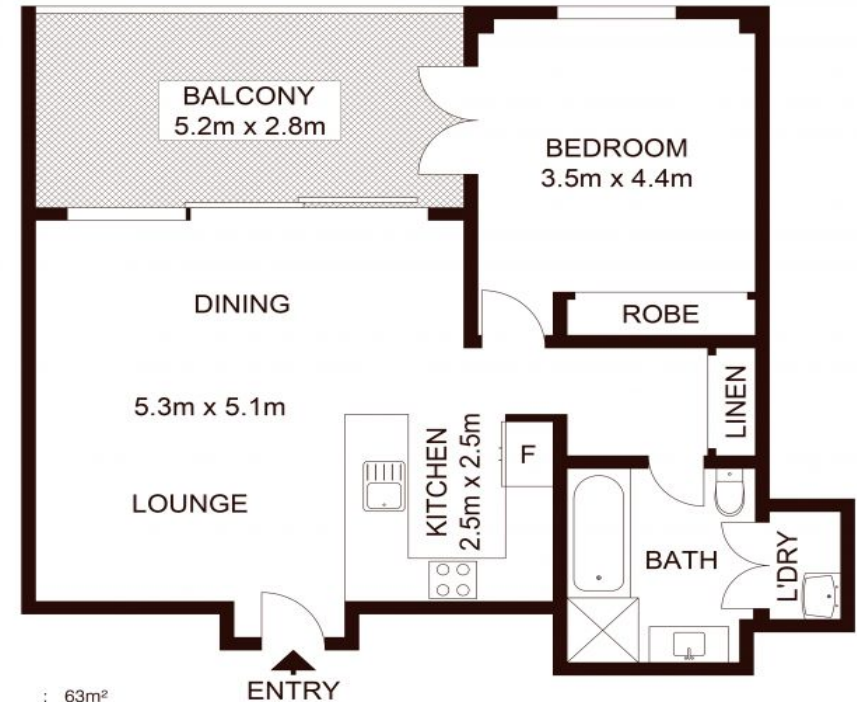
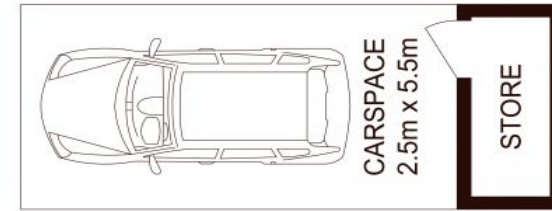
Features Air Conditioning, Alarm System, Built-ins, Close to Transport, Intercom

## CONTACT

Cameron Nicholls 0421 733 118

NICHOLLS & CO  
ESTATE AGENTS

\*Disclaimer:



INT : 63m<sup>2</sup>  
EXT : 15m<sup>2</sup>  
CAR SPACE : 14m<sup>2</sup>  
STORAGE : 2m<sup>2</sup>

PrintForce

NICHOLLS & CO  
ESTATE AGENTS

32/28 Village Drive, BREAKFAST POINT

Not to scale • All measurements are approximate • Drawn for marketing purposes only • Floorplan by © Industrie Media



1/569 Great North Road, Abbotsford 2046 0421 733 118 [nichollsandco.com.au](http://nichollsandco.com.au)