





## BREAKFAST POINT

24/66 Village Drive

Resort style living at its finest



Enviably positioned opposite the village green, this sprawling light filled apartment enjoys beautiful leafy outlooks at every turn. Situated in the elegantly appointed 'Celeste' building, close to the foreshore, Cabarita Wharf and Country Club a truly magnificent lifestyle opportunity awaits. Featuring:

-Large galley style kitchen overlooking dining, living and outdoor alfresco with granite

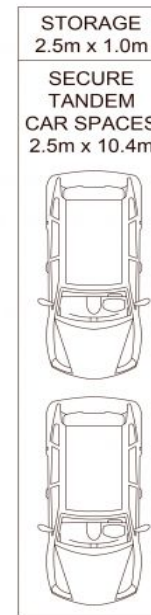
Features Intercom

## CONTACT

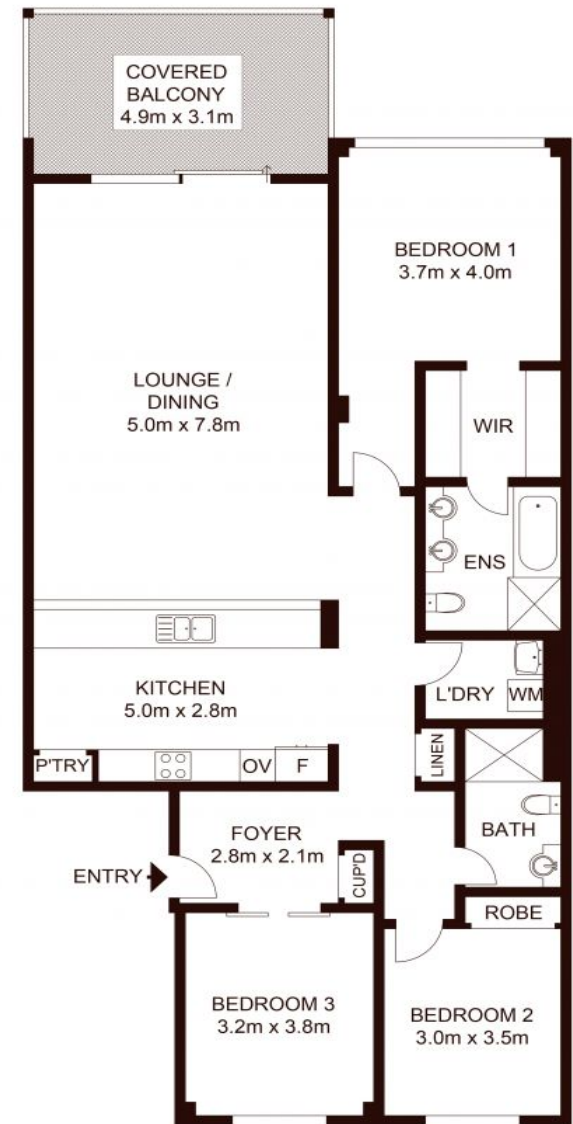
Cameron Nicholls 0421 733 118

NICHOLLS & CO  
ESTATE AGENTS

\*Disclaimer:



BASEMENT



LEVEL TWO

INT : 143.0m<sup>2</sup>  
BALCONY: 15.19m<sup>2</sup>  
CAR SPACE: 26.0m<sup>2</sup>  
STORAGE: 2.5m<sup>2</sup>

PrintForce

NICHOLLS & CO  
ESTATE AGENTS

24/60-66 Village Drive, BREAKFAST POINT

Not to scale • All measurements are approximate • Drawn for marketing purposes only • Floorplan by © Industrie Media



1/569 Great North Road, Abbotsford 2046 0421 733 118 [nichollsandco.com.au](http://nichollsandco.com.au)