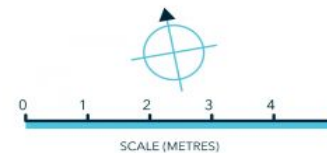
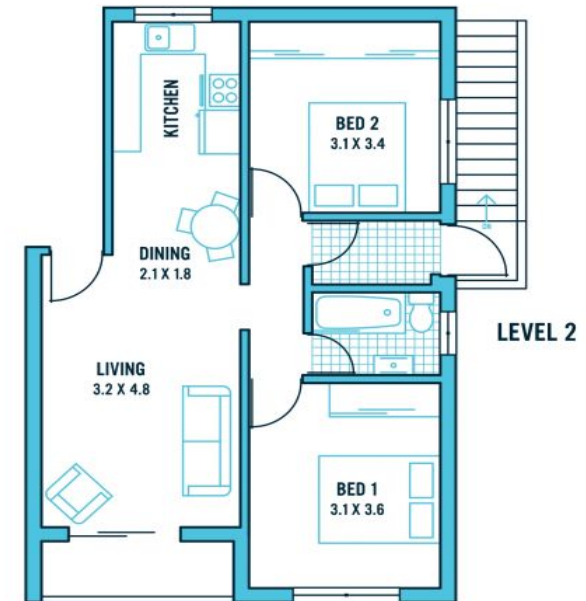
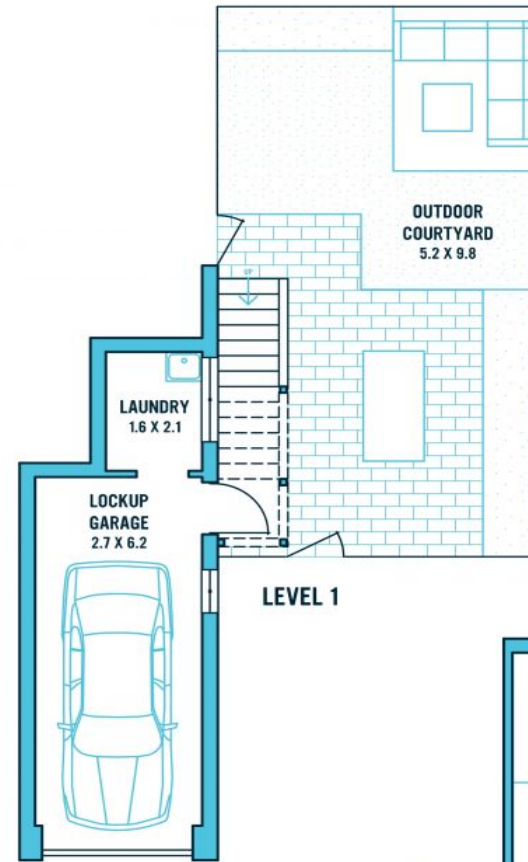




Approx. Internal Area: 72.6m²



We believe the information in this document to be reliable, however interested persons should make their own enquiries. Dimensions are approximate

GLADESVILLE

2/19 Ashburn Place

Modern boutique apartment with fabulous entertaining courtyard



In a boutique building of just six, this recently refurbished ground floor apartment enjoys tasteful light filled interiors, quality finishes and a peaceful leafy outlook. Enviably located, close to city transport and walking distance to local restaurants, cafes and shops ? this desirable property represents easy living at its finest. Also featuring:

- Modern galley style kitchen with stone bench tops, dishwasher and quality appliances
- Open plan dining and living flowing on to front balcony
- Oversized fully fenced

CONTACT

Cameron Nicholls 0421 733 118

NICHOLLS & CO
ESTATE AGENTS

1/569 Great North Road, Abbotsford 2046 0421 733 118 nichollsandco.com.au