





RYDE

503N/2 Lardelli Drive

Contemporary village living at its finest



Located in the highly coveted and undeniably thriving Putney Hill community, this spacious executive style apartment enjoys an amenity rich

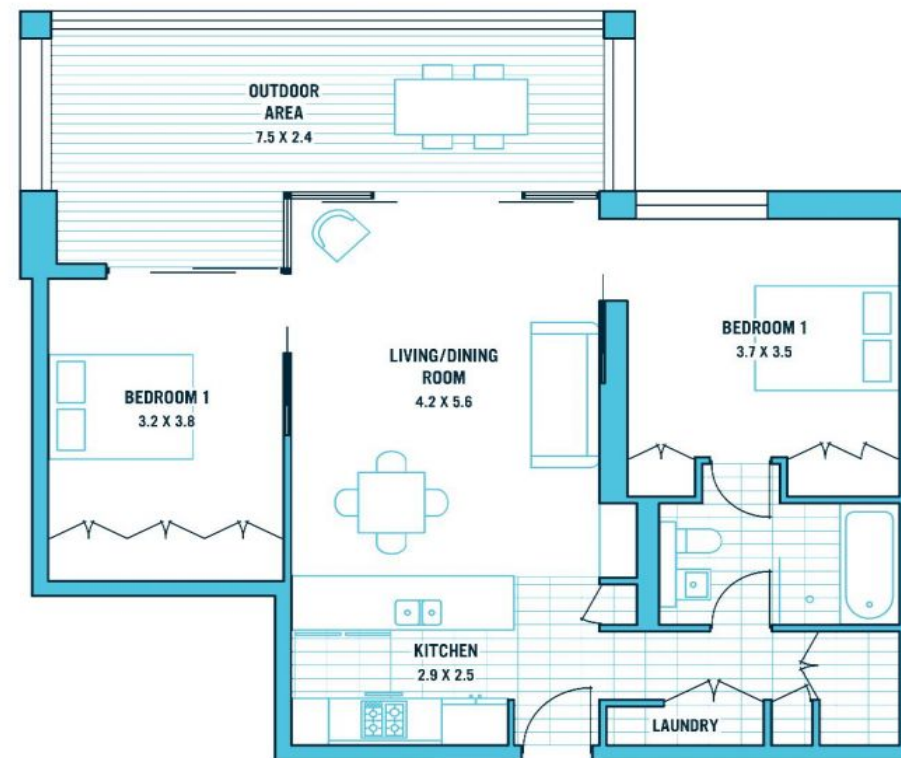
Features Air Conditioning, Car Parking - Basement, Carpeted, Close to Schools, Close to Shops, Close to Transport, Intercom

CONTACT

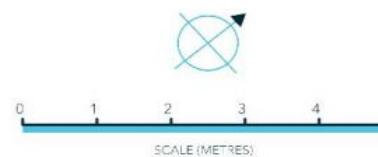
Cameron Nicholls 0421 733 118



*Disclaimer:



FLOOR PLAN



We believe the information in this document to be reliable, however interested persons should make their own enquiries. Dimensions are approximate

1/569 Great North Road, Abbotsford 2046 0421 733 118 nichollsandco.com.au