





CROWS NEST

15/143 Ernest Street

The Leafy Retreat



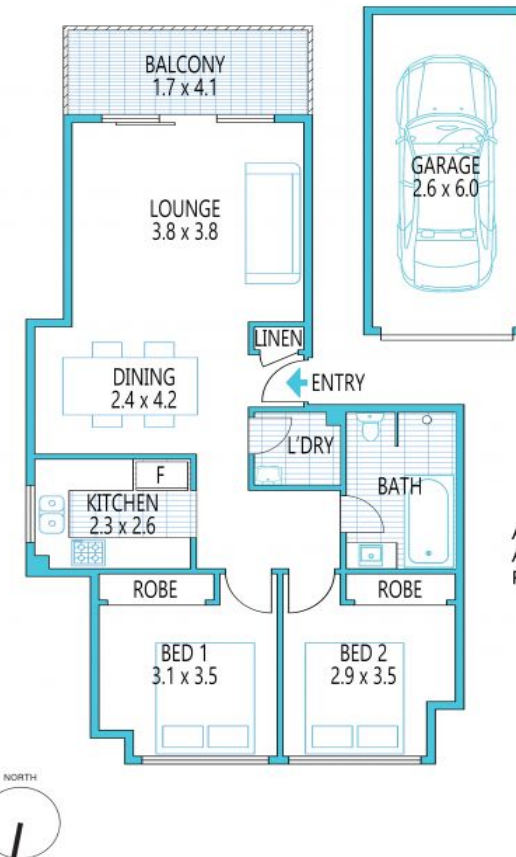
Introducing... 15/143 Ernest Street, Crows Nest
 Enviably located, just a short easy stroll from the vibrant Crows Nest village, this fantastic offering enjoys exceptional convenience and presents an exciting lifestyle opportunity. With beautiful leafy surrounds and a supremely private

CONTACT

Cameron Nicholls 0421 733 118



*Disclaimer:



Approx. internal area - 65 sqm
 Approx. external area - 7.0 sqm
 Parking area - 15.6 sqm

15/143 Ernest Street, Crows Nest

9713 7433
 0421 733 118

nichollsandco.com.au

Not to scale, all measurements are approximate, drawn for marketing purposes only.

1/569 Great North Road, Abbotsford 2046 0421 733 118 nichollsandco.com.au