





ASHFIELD

14/21 Ormond Street

The Park Royal



Easy-care living and an unbeatable central location are all yours to enjoy with this charming one-bedroom, one-bathroom unit. Whether you're on the hunt for your very first home, a comfortable downsizer or a quality addition to your investment portfolio in a prime location, this property is sure to tick all the boxes.

A single car space and an external laundry complete the floorplan. This unit is set directly

Features Car Parking - Surface, Carpeted, Close to Schools, Close to Shops, Close to Transport, Intercom

CONTACT

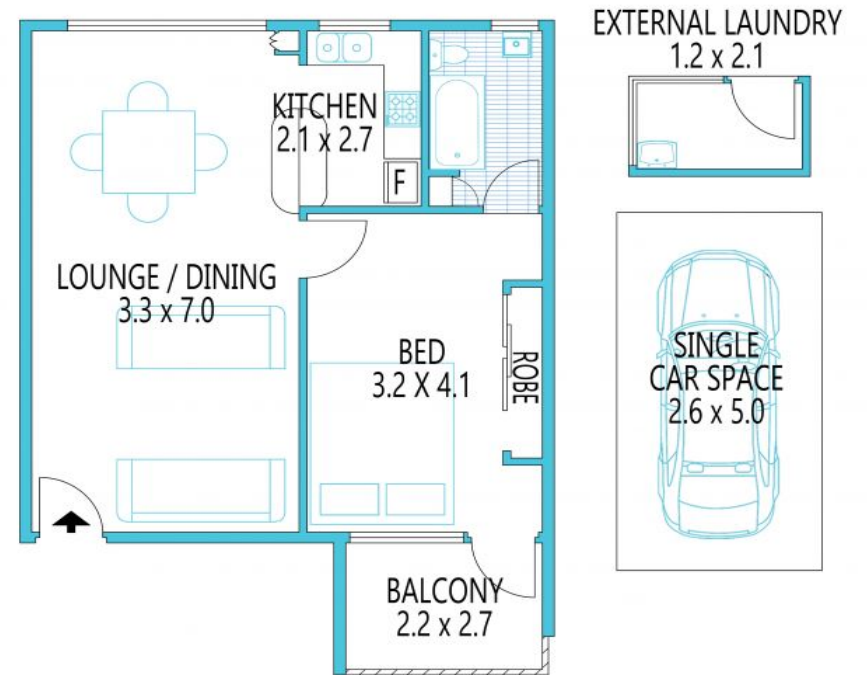
Cameron Nicholls 0421 733 118

NICHOLLS & CO
ESTATE AGENTS

*Disclaimer:

N&CO

ESTATE AGENTS



14/21 Ormond Street, Ashfield



9713 7433
0421 733 118



nichollsandco.com.au

Not to scale, all measurements are approximate, drawn for marketing purposes only.

1/569 Great North Road, Abbotsford 2046 0421 733 118 nichollsandco.com.au